





# About **Stapleton Yard**

---

Stapleton Yards boasts simplicity and honest architectural design structure using raw materials to tie the scheme into the existing architectural language of the beautiful Pinetown, with 15 725m<sup>2</sup> retail space.

**Stapleton Yards is strategically situated on the corner of Otto Volek Road and Josiah Guemedede, New Germany, KwaZulu Natal.**





# Fact Sheet



**Current GLA:** 15 725m<sup>2</sup>

**Number of tenants:**  
42 Stores & 2 Drive-throughs

**Anchors:** Woolworths, Checkers,  
Dischem

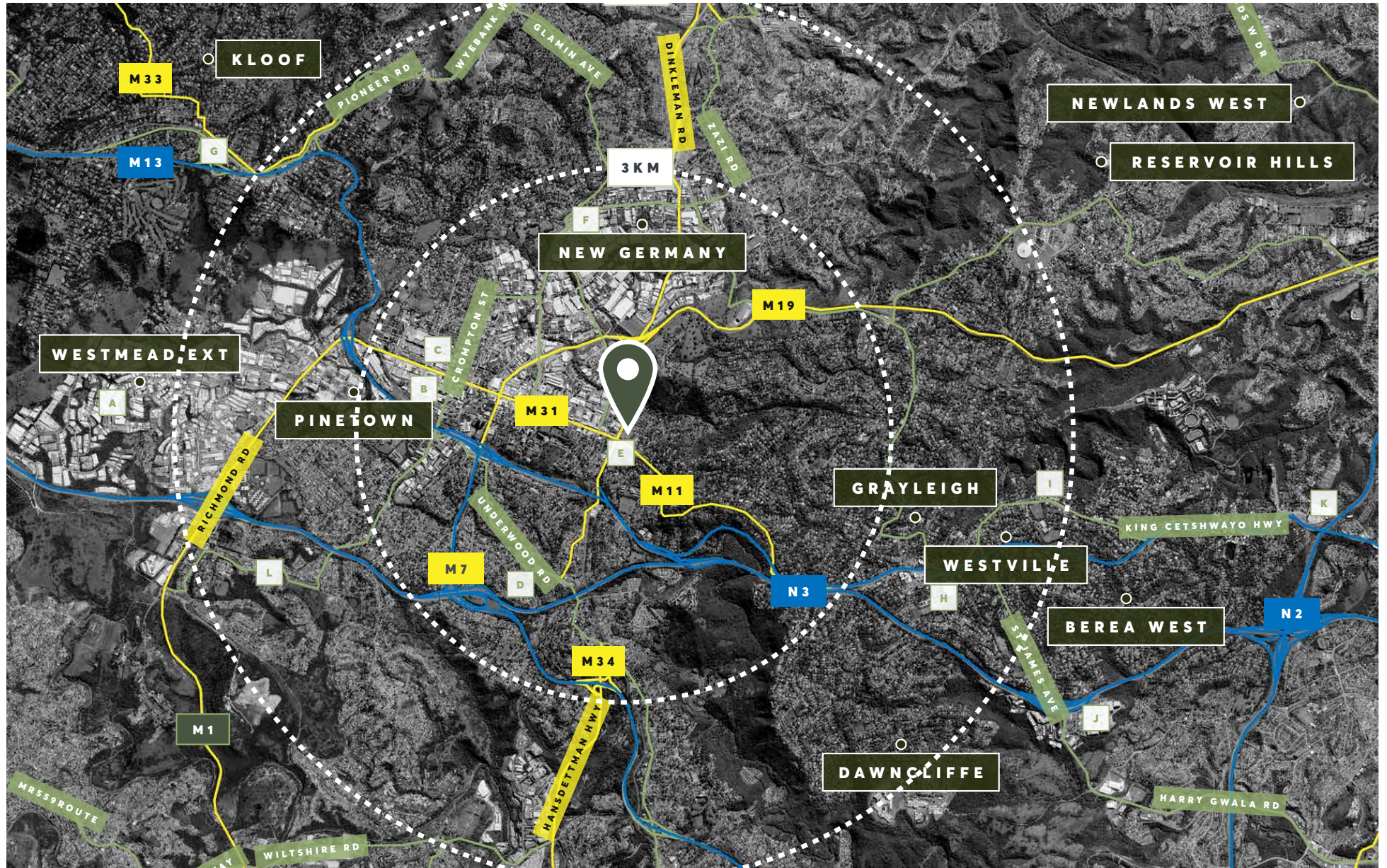
**Trading hours:**  
Mon - Thu: 9am - 6pm  
Fri: 9am - 7pm  
Sat: 9am - 5pm  
Sun & Public Holidays: 9am - 2pm

**Managed by:**  
Broll

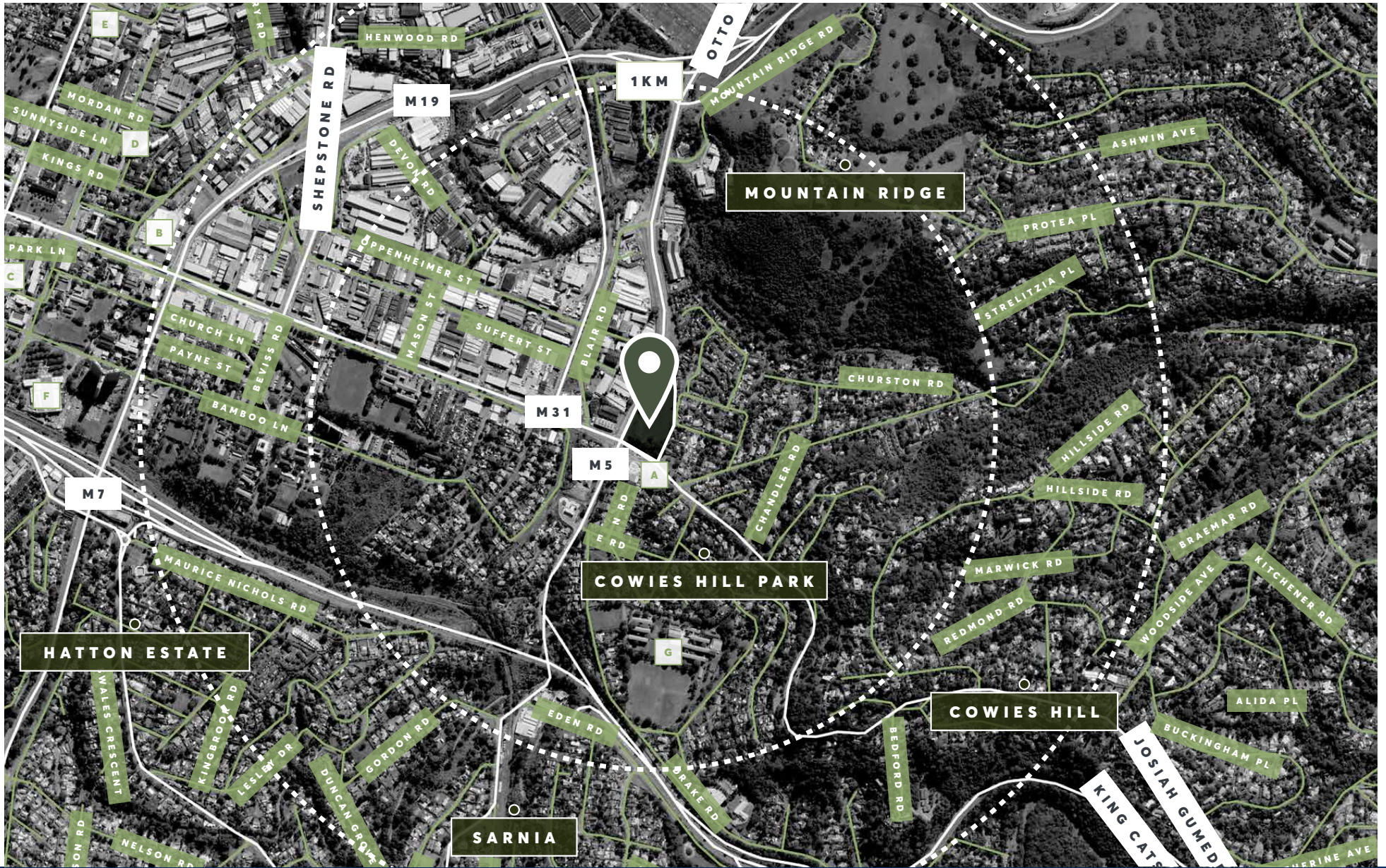
**Parking Bays:**  
564

**Unique Features:**  
An industrial architectural design with the use of existing industrial urban fabric.













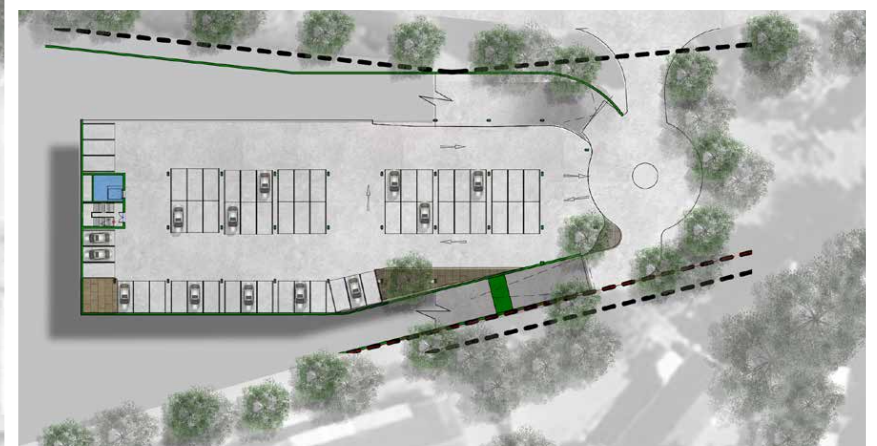
Micro **Locality**







LEVEL -2



**LOWER GROUND FLOOR**





UPPER GROUND FLOOR







01

02

03

W WOOLWORTHS

W WOOLWORTHS





NY.NY

Fashion

Checkers  
Liquor Shop

meat & cheese

Checkers





## JOHANNESBURG

---

**Tel:** +27 10 020 1810

**Email:** [info@retailafrica.co.za](mailto:info@retailafrica.co.za)

**Web:** [www.retailafrica.co.za](http://www.retailafrica.co.za)

1 Melrose Square, Amdec House,  
Office 303, Melrose Arch, 2076,

P O Box 877, Melrose Arch, 2076

