



## About **Olivedale Corner**

---

Olivedale Corner, strategically situated on President Fouché Dr in Randburg, is a 5000m<sup>2</sup> open-air retail centre, anchored by Checkers and various convenience stores.

**Meadowbrook Office Park and Business Estate as well as the Netcare Olivedale Hospital are located within a close proximity to the centre.**

Sharonlea Pre and Primary School as well as PLG Northriding Academy are just some of the schools to be found within the neighbouring suburbs of Olivedale.





# Fact Sheet



**Current GLA:** 5 000m<sup>2</sup>

**Number of tenants:**  
22 stores

**Anchors:** Checkers

**Managed by:**  
Broll

**Trading hours:**  
Mon - Thu: 9am - 6pm  
Fri: 9am - 7pm  
Sat: 9am - 5pm  
Sun & Public Holidays:  
9am - 2pm

**Demographics:**

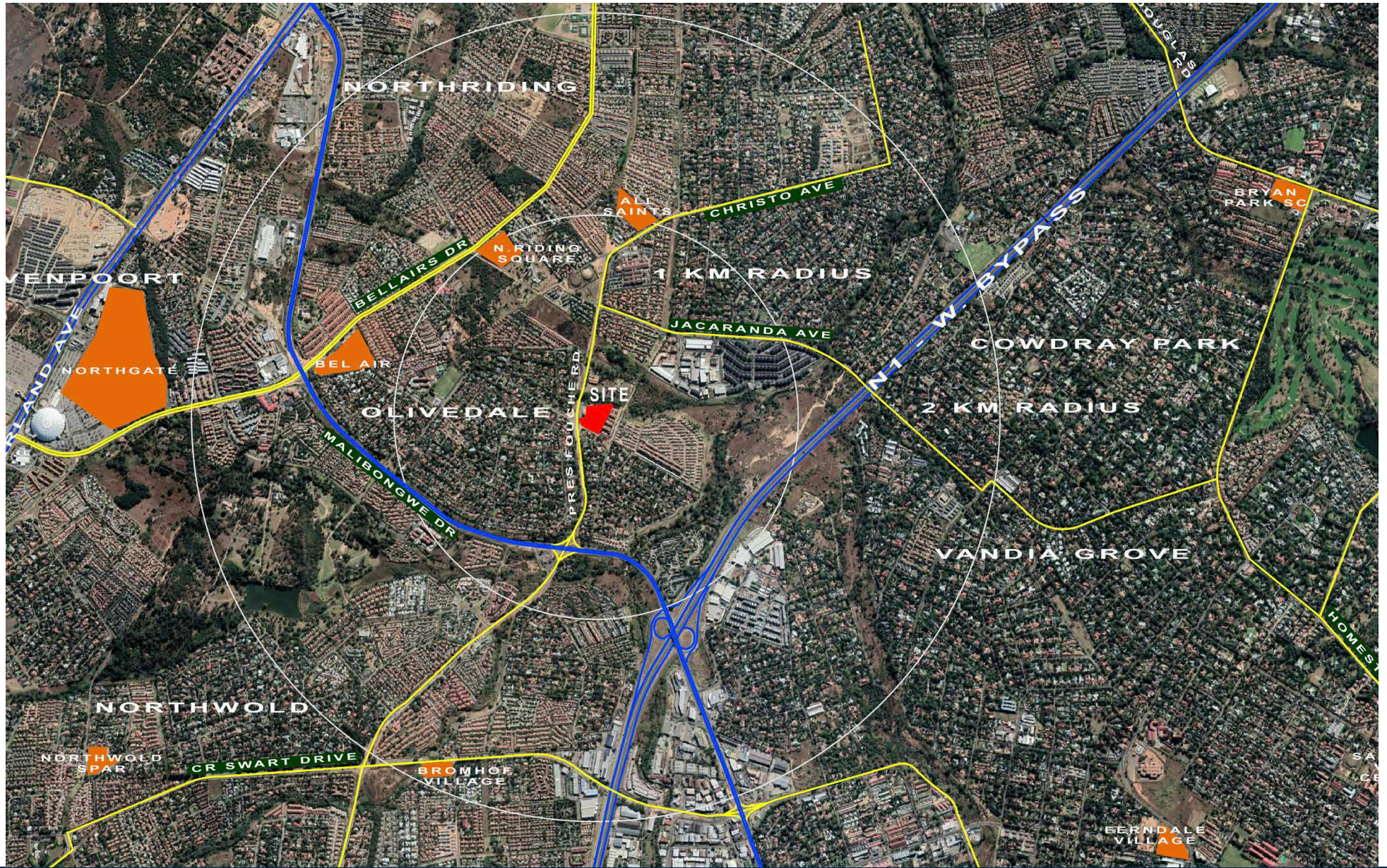
52% Female & 48% Male  
Age Group: <18, 30-40 years  
85% Economically Active

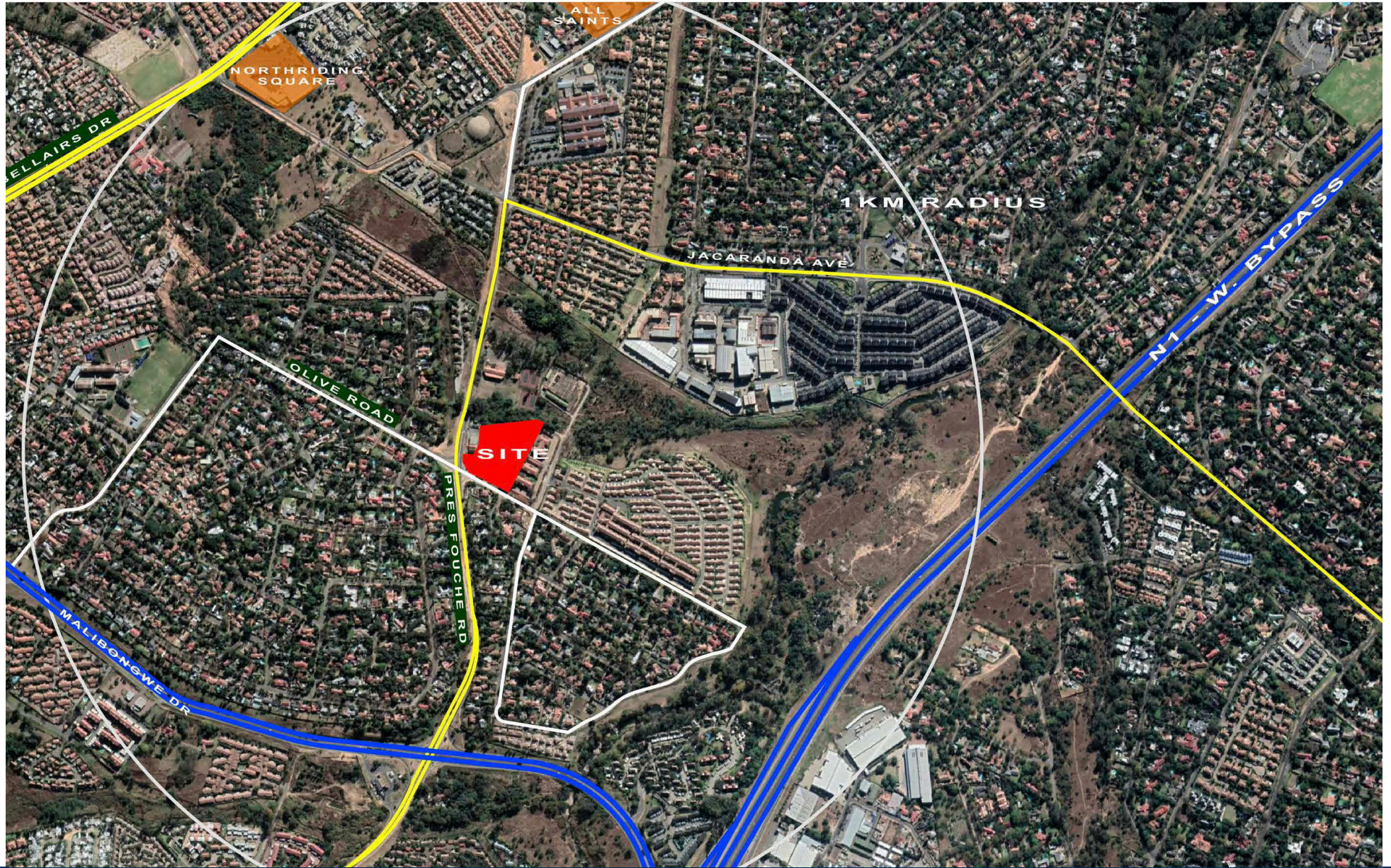
**Primary catchment area:**

Average monthly household  
income of between R50,000 -  
R80,000

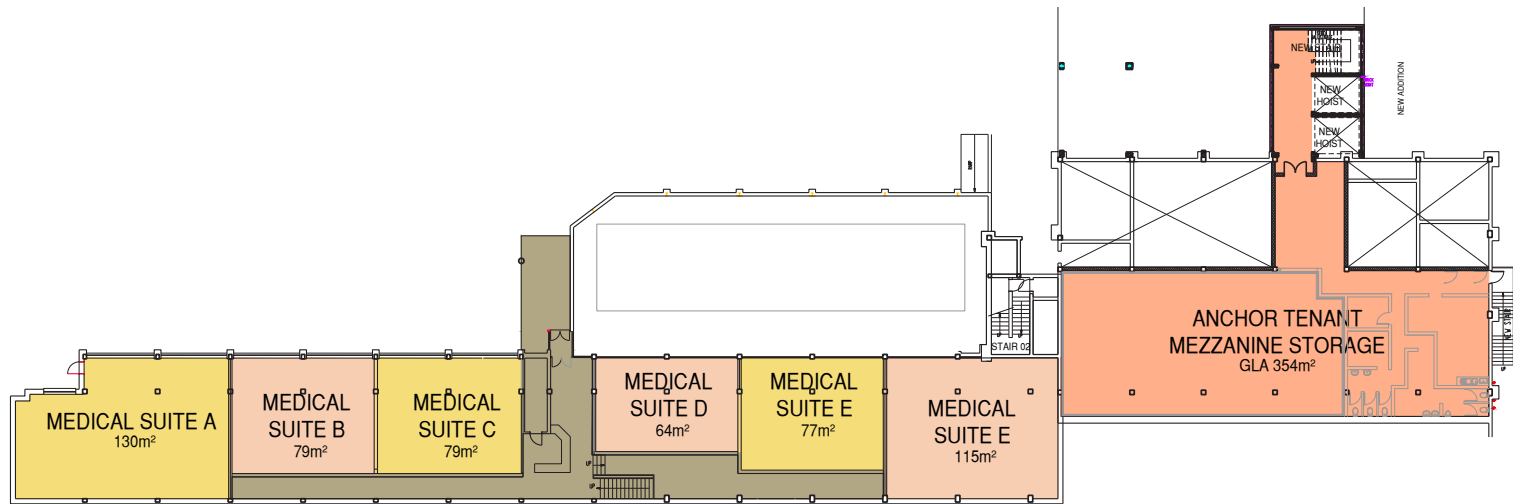
**Unique Features:**

- Medical Suites

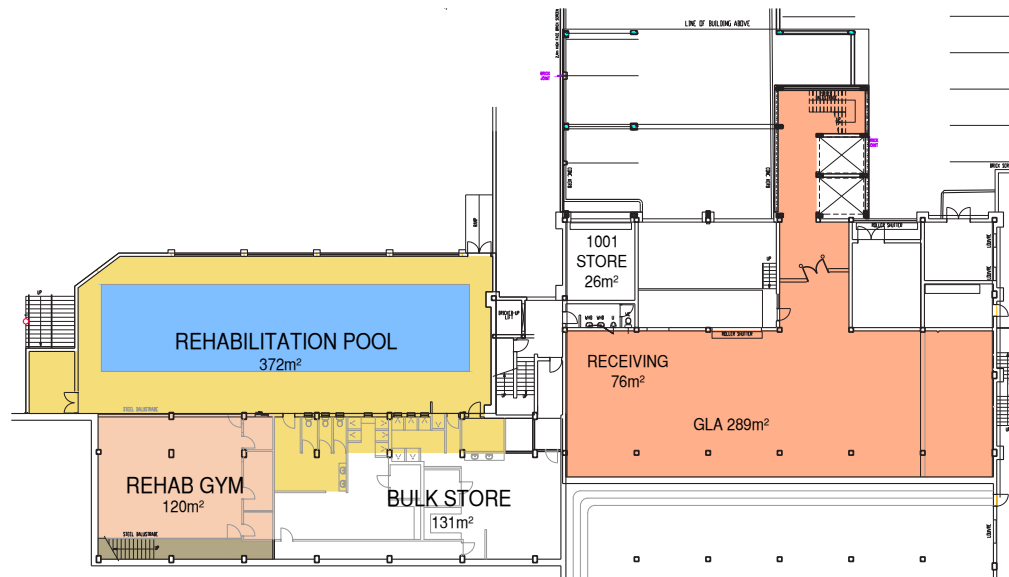








mezzanine level - medical suites



lower ground level - rehabilitation area







PeachWorks

GREEN RIVER

LaBotiga

hinor

affrica home

GREEN RIVER

EVERMOTION



## JOHANNESBURG

---

**Tel:** +27 10 020 1810

**Fax:** +27 10 020 1811

**Email:** [info@retailafrica.co.za](mailto:info@retailafrica.co.za)

**Web:** [www.retailafrica.co.za](http://www.retailafrica.co.za)

1 Melrose Square, Amdec House,  
Office 303, Melrose Arch, 2076,

P O Box 877, Melrose Arch, 2076

